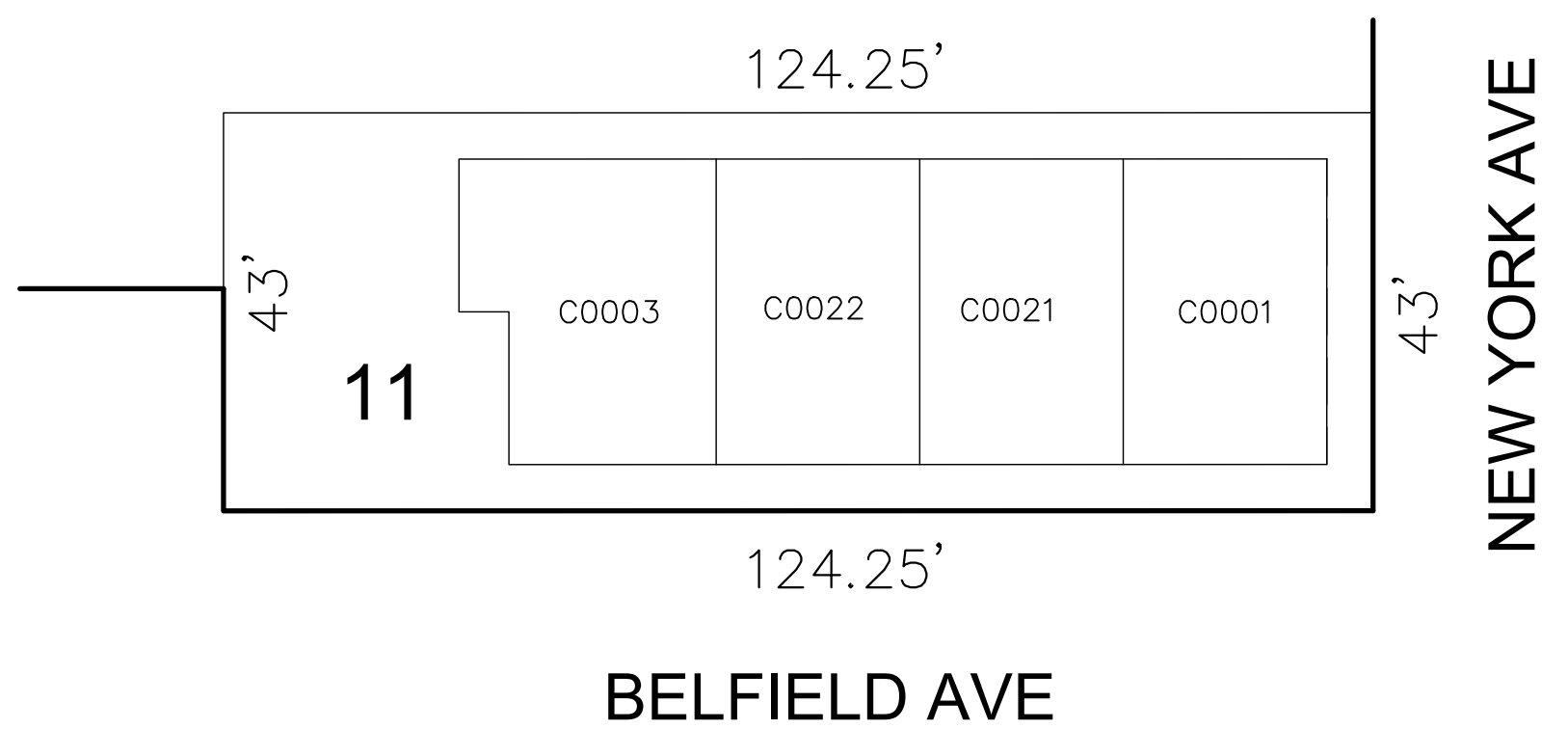


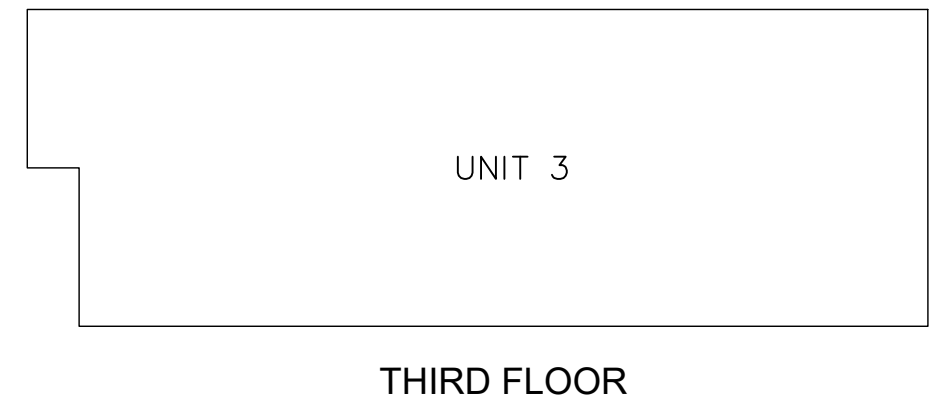
36 SOUTH NEW YORK AVE  
CONDOMINIUM

150

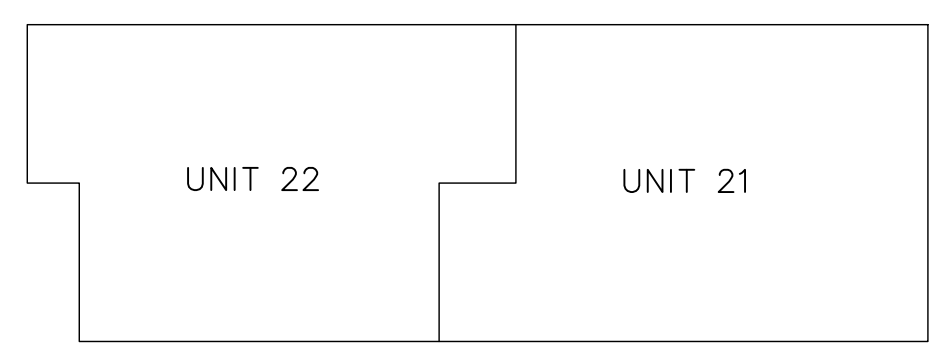


0.12 Ac± TOTAL  
SCALE: 1"=20'

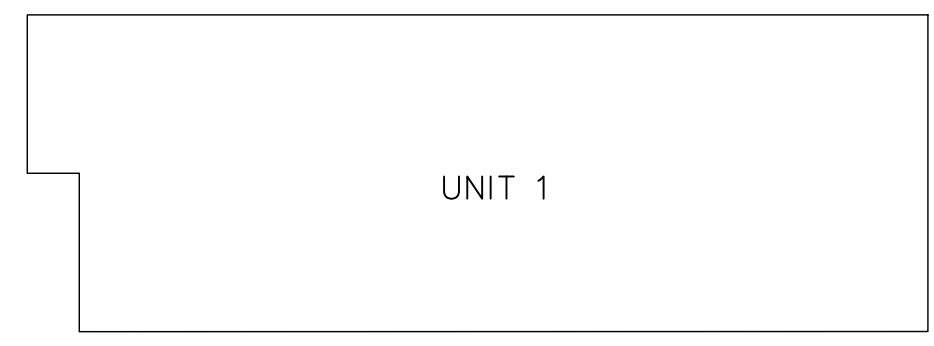
QUAL	UNIT TYPE	FLOOR	SQ. FT.
C0001		1	2980
C0021		2	1502
C0022		2	1541
C0003		3	3270



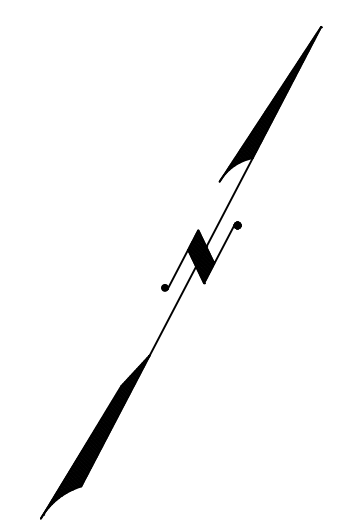
THIRD FLOOR



SECOND FLOOR



FIRST FLOOR



REVISIONS				
DATE	BY	LIC. NO.	BLOCK	LOT

THIS MAP HAS BEEN GIVEN A  
FORMAL CERTIFICATION BY THE  
DIVISION OF TAXATION ON  
NOVEMBER 25, 1997, SIGNED BY  
WILLIAM H. BLACK, CTA AND  
ASSIGNED SERIAL NUMBER 778

**TAX MAP**  
**CITY OF ATLANTIC CITY**  
ATLANTIC COUNTY, NEW JERSEY  
NOT TO SCALE DATE: AUG 1995  
**JOSEPH M DOLAN, PLS, PP**  
MUNICIPAL LAND SURVEYOR  
NEW JERSEY LICENSE NO. 23930  
OFFICE OF THE CITY ENGINEER  
603 CITY HALL  
ATLANTIC CITY, NEW JERSEY 08401

TO SHOW CONDITIONS AS OF MAY 2019  
COA# 24GA27973300